

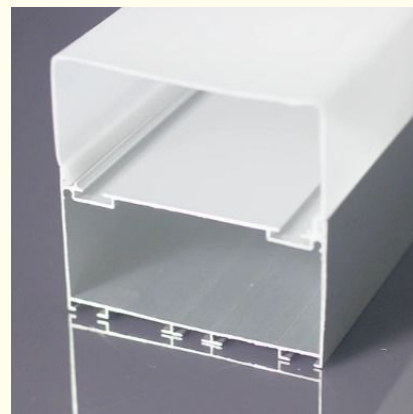


Two-layer Suspended Aluminium LED Strip Lights Customized Lighting Solution

Our Product Introduction

Basic Information

- Place of Origin: Shenzhen China
- Brand Name: YSENLED
- Certification: CE ROHS LVD EMS
- Model Number: YS-BAPL038
- Price: Negotiable
- Delivery Time: Within 48 hours
- Payment Terms: T/T
- Supply Ability: 100,000 meters per week



Product Specification

- Product Description: Two Layers Suspending Deep Aluminum Profile Keeping Power Option: 1) PC Clear Diffuser 2) PC Opal Diffuser
- Highlight: **Suspended Aluminium LED Strip Lights, Two-layer Aluminium LED Strip Lights**

for more products please visit us on led-stripslights.com

Product Description

Two-layer suspended deep aluminum light strip profile is a modern lighting solution, commonly used in commercial and residential spaces to provide beautiful and efficient lighting effects. Here are some basic introductions to this product:

I. Product Features:

1. ****Double-layer design****: The two-layer suspended structure not only increases the beauty of the product, but also provides a more uniform lighting effect.
2. ****Deep aluminum material****: The aluminum material is light, strong, and has good heat dissipation performance, which helps to extend the service life of the lamp.
3. ****Suspension effect****: The lamp is suspended below the ceiling and does not directly contact the ceiling, providing more flexibility and design space for lighting.
4. ****Customization****: The length, width and color of the light strip can be customized according to different space and lighting needs.
5. ****Energy-saving and efficient****: Usually equipped with LED light source, it is energy-saving and has high brightness, suitable for long-term use.

II. Application scenarios:

- ****Commercial space****: Such as shopping malls, offices, hotel lobbies, etc., providing bright and elegant lighting.
- ****Residential space****: Such as living room, kitchen, bedroom, etc., creating a warm and comfortable atmosphere.
- ****Public facilities****: such as libraries, museums, exhibition halls, etc., provide uniform and soft lighting.

III. Installation advantages:

- ****Simple and fast****: The standardized installation system makes the installation process simple and fast.
- ****Easy to maintain****: It is easy to replace the light source and perform daily maintenance.
- ****Beautiful and elegant****: The modern design can enhance the overall beauty of the space.

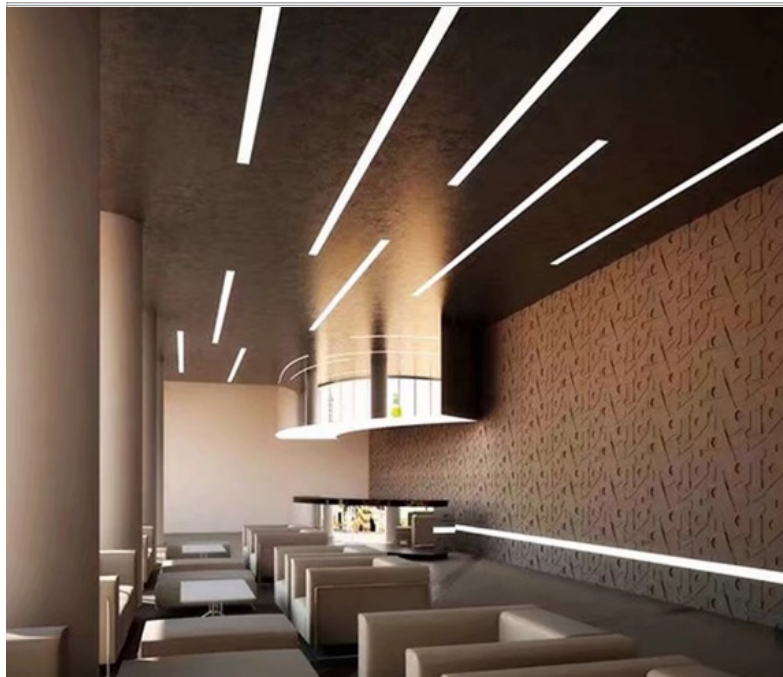
IV. Technical parameters (example):

- ****Material****: Aluminum alloy
- ****Surface treatment****: Anodizing or powder coating
- ****Light source type****: LED
- ****Power****: Depends on the specific model
- ****Color temperature****: Adjustable, usually with options such as warm white and cold white
- ****Size****: Customizable
- ****Lifespan****: LED light sources have a long lifespan of more than 25,000 hours

V. Precautions:

- ****Installation environment****: Make sure the installation environment is dry to avoid moisture causing damage to the lamp.
- ****Power adapter****: Make sure the power adapter used is compatible with the lamp.
- ****Professional installation****: It is recommended to be installed by professionals to ensure safety and effectiveness.

If you need more specific product information or have specific needs, it is recommended to contact our lighting consultants via email or WhatsApp.





SHENZHEN YSENLED LIGHTING CO.,LTD



lyzylight@gmail.com



led-stripslights.com

2F, Building 3, Ruihang Industrial , No.8 Laocun Road, Tangtou, Shiyan, Bao'an District, Shenzhen, Guangdong, China