

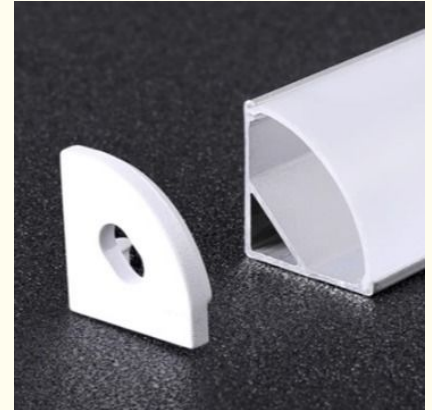


Curtain Box Surface Mounted Light Strip Aluminum Profile Special 45 Degree Oblique Light Slot

Our Product Introduction

Basic Information

- Place of Origin: Shenzhen China
- Brand Name: YSENLED
- Certification: CE ROHS LVD EMS
- Model Number: YS-BAPL067-F
- Price: Negotiable
- Delivery Time: Within 48 hours
- Payment Terms: T/T
- Supply Ability: 100,000 meters per week



Product Specification

- Description: Waterproof Led Profile:IP68, PMMA Opal Matte + PMMA Light Lense ,rigid LED Light Bar Applied Inside,suitable For Furniture Or Cabinet Lighting Or Bath Room
- Highlight: **Surface Mounted Light Strip Aluminum Profile, Curtain Box Light Strip Aluminum Profile, 45 Degree Light Strip Aluminum Profile**

for more products please visit us on led-stripslights.com

Product Description

Curtain box light strip troughs, especially those designed for surface installation and with a 45-degree beveled aluminum profile, are a popular interior decoration lighting solution designed to provide soft and efficient light effects for curtain areas. Here are a few key features and introductions of this type of product:

Product Features:

45-degree bevel design: This special design allows the light trough to project light downward at a 45-degree angle after installation, creating a unique light and shadow effect, which can illuminate the curtain area without producing glaring direct light, and is very suitable for creating a warm and comfortable home atmosphere.

Aluminum profile material: Made of high-quality aluminum alloy material, it has good corrosion resistance and heat dissipation performance, ensuring the long-term stable operation and service life of the lamp. At the same time, aluminum profiles are light and easy to process, making them easy to install and maintain.

Surface-mounted structure: The surface-mounted design means that the light trough is directly installed on the wall or ceiling surface, without the need for embedded construction, which greatly simplifies the installation process, is suitable for lighting upgrades in rooms that have already been decorated, and is also convenient for future maintenance or adjustments.

Dedicated to LED light strips: This type of light trough is usually equipped with a special card slot or fixture that can perfectly fit the LED light strip, ensuring that the light strip is firmly installed and prevents it from falling off. It also allows the heat of the light strip to be effectively dissipated, improving the overall lighting efficiency.

Diverse choices: There are a variety of sizes, lengths and color temperatures available on the market, which can be customized according to actual needs and interior decoration styles. For example, warm white light (3000K) is suitable for creating a warm atmosphere, while cold white light is more suitable for environments that require bright light.

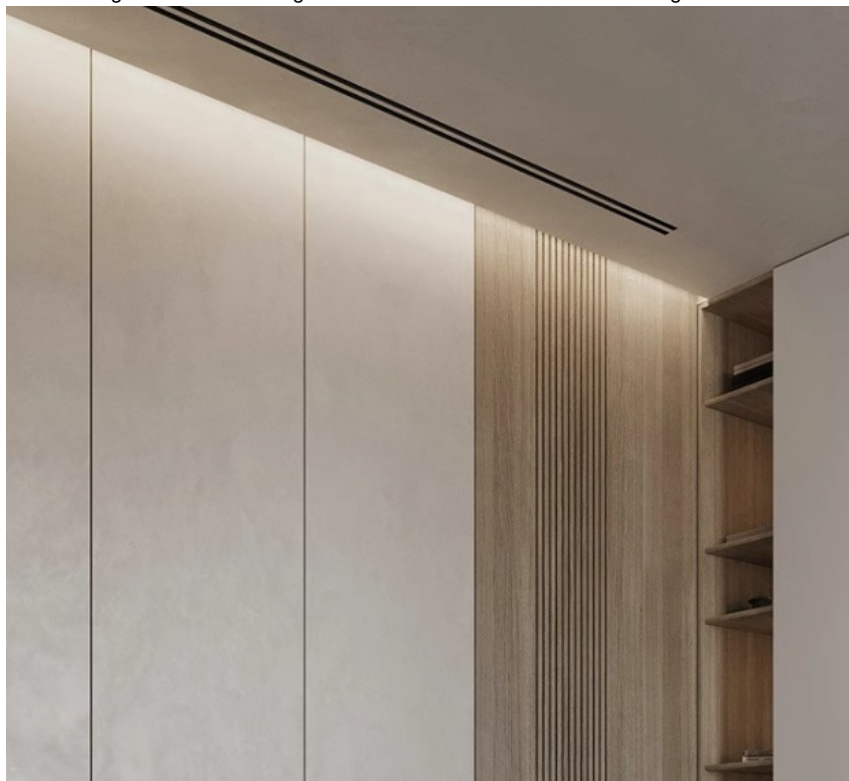
Easy installation: Generally equipped with easy-to-understand installation instructions, users and even DIY enthusiasts can easily complete the installation. Some products may also provide matching installation accessories, such as fixing clips, connectors, etc., to ensure a more convenient installation process.

Application scenarios:

Curtain areas in family living rooms and bedrooms to increase the sense of space hierarchy.

Commercial places such as hotel lobbies, restaurants, etc., to improve the overall decoration level.

Office lounge areas or meeting rooms to create a comfortable working environment.





SHENZHEN YSENLED LIGHTING CO.,LTD



lyzylight@gmail.com



led-stripslights.com

2F, Building 3, Ruibang Industrial , No.8 Laocun Road, Tangtou, Shiyan, Bao'an District, Shenzhen,
Guangdong, China